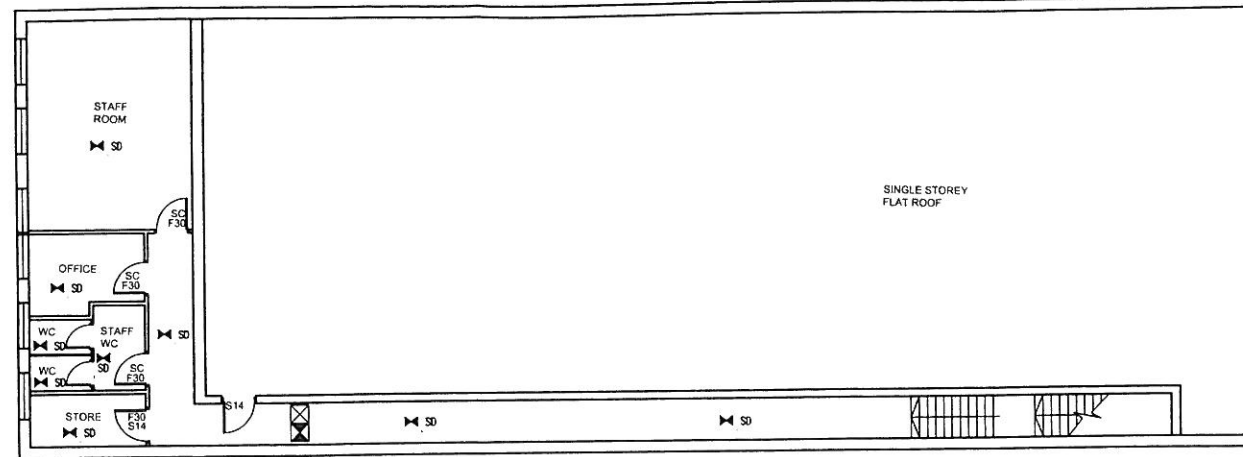


Do not scale off this drawing. All dimensions to be checked on site prior to manufacture and construction. This drawing is the property of Harrison Ince Partnership and should not be reproduced without permission. All discrepancies to be brought to the attention of the architect immediately. This drawing to be read in conjunction with the specification / bill of quantities and related drawings.

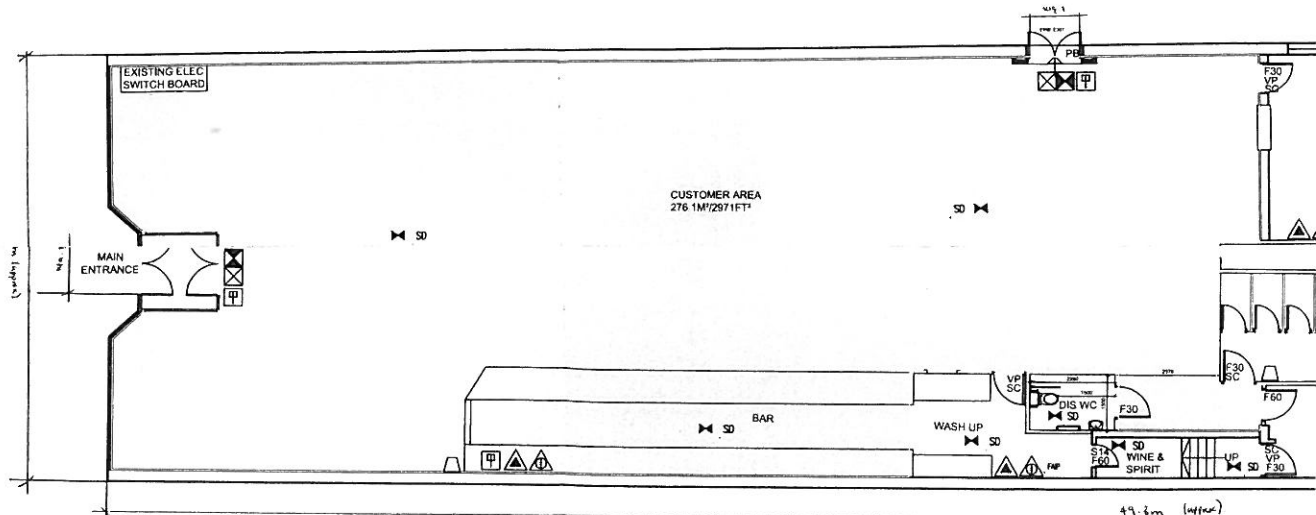
REVISIONS			
-	FIRST ISSUE	31.08.10	SC
A	AMENDED TO SHOW DOOR TO CUSTOMER TOILET CORRIDOR AND WINE & SPIRIT STORE DOOR FD.30	17.09.10	SC
B	AMENDED TO SHOW FD60'S TO WINE AND SPIRIT STORE AND TOILET CORRIDOR	22.09.10	SC

SCHEDULE OF ACCOMMODATION

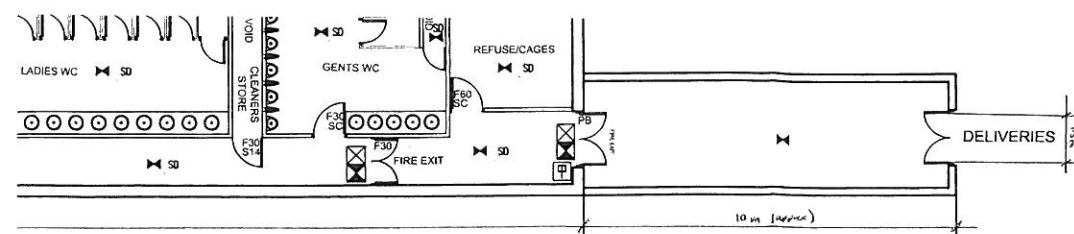
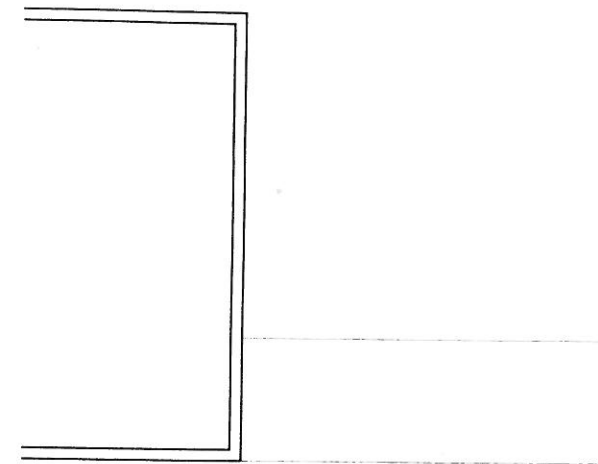
CUSTOMER AREA	- 276.1M ² /2971FT ²
KITCHEN	- 43.7M ² /470FT ²
CELLAR	- 36.7M ² /395FT ²
REFUGE	- 10.6M ² /114FT ²



PROPOSED FIRST FLOOR PLAN
SCALE - 1:100



PROPOSED GROUND FLOOR PLAN
SCALE - 1:100



FIRE AUTHORITY REQUIREMENTS

- F30 HALF HOUR FIRE RESISTANT WITH SMOKE SEALS & INTUMESCENT STRIPS
- F60 ONE HOUR FIRE RESISTANT WITH SMOKE SEALS & INTUMESCENT STRIPS
- VP VISION PANEL
- PB PANIC BOLT
- SC SELF-CLOSING
- SCA SELF-CLOSING AUTOMATIC RELEASE
- FL FUSIBLE LINK
- DS DOOR SELECTOR
- S14 "FIRE DOOR KEYP LOCKED" 10mm LETTERS TO BOTH SIDES OF DOOR LEAF
- ILLUMINATED MAINTAINED "FIRE EXIT" SIGN
- AREA COVERED BY ESCAPE LIGHTING TO BS.5266 PART 1
- AREA COVERED BY SMOKE DETECTORS-BSEN 54-7
- AREA COVERED BY HEAT DETECTORS
- FIRE ALARM CALL POINT
- FIRE ALARM INDICATOR PANEL
- FIRE BLANKET IN CONTAINER
- CARBON DIOXIDE FIRE EXTINGUISHER
- 9 LITRE WATER EXTINGUISHER
- DRY POWDER EXTINGUISHER
- FOAM FIRE EXTINGUISHER
- ALARM WARNING DEVICE (voice type in Customer areas) music sound system to be de-activated

KEY

AREA FOR SALE OF ALCOHOL, PROVISION OF LATE NIGHT REFRESHMENT AND REGULATED ENTERTAINMENT.

GENERAL NOTES

GENERAL:
ALL WALLS AND CEILING FINISHES IN CIRCULATION AREAS TO COMPLY WITH CLASS 0 SPREAD OF FLAME CHARACTERISTICS. ALL WALLS AND CEILING FINISHES TO PUBLIC AREAS TO HAVE CLASS 1 SPREAD OF FLAME CHARACTERISTICS IN ACCORDANCE WITH BS 476 PART 7:1971.

DOOR TYPES:
FD - NEW HALF HOUR 30/30 FIRE DOOR, SELF CLOSING WITH 30/30 FRAME. ALL FIRE DOORS TO BE FITTED WITH INTUMESCENT / SMOKE SEALS. ALL LOCKABLE DOORS TO HAVE INTERNAL THUMBURNS
EXTERNAL FIRE EXIT DOORS TO BE FITTED WITH PANIC BOLTS. ANY LOW LEVEL GLAZING IN DOORS TO BE FITTED WITH SAFETY GLASS IN ACCORDANCE WITH BS5206
PB - EXTERNAL DOOR ON FRAME WITH PANIC BOLT
VP - ALL DOORS INDICATED TO HAVE A LOW LEVEL GEORGIAN WIRED VISION PANEL (GLASS TO BE SET IN INTUMESCENT PASTE WITH HARDWOOD BEADING).

ALL NEW UPHOLSTERY COVERINGS TO BE BS 5852
PART 1: 1989 OF BS 5852 PART 2 WITH IGNITION RESISTANCE REQUIREMENTS OF BS 7176 OR DOE PSAF3 SPECIFICATION AS APPROPRIATE.
FURNITURE TO CONFORM TO BS 7176 AND TO CARRY LABEL STATING TO WHICH HAZARD CATEGORY THEY COMPLY

CURTAINS, DRAPES AND OTHER DECORATIVE MATERIALS TO BE INHERENTLY NON-FLAMMABLE OR DURABLY FLAME PROOFED AND TO CONFORM WITH BS 5867 PART 2 FABRIC TYPE B. TEXTILE FLOOR COVERINGS TO BE TESTED TO BS 4790:1987 (DETERMINATION OF FLAMMABILITY - HOT METAL NUT TEST) TO HAVE A LOW RADIUS OF EFFECTS OF IGNITION (25MM) ARTIFICIAL FLAME TO BE INHERENTLY FLAME RETARDANT OR TREATED WITH A FIRE RETARDANT SOLUTION AND TO BE BEDDED IN NON-COMBUSTIBLE MATERIALS TO BS 5852 PART 1. PFA GRANULES OR SIMILAR MATERIALS (CERTIFICATE TO BE PROVIDED BY CONTRACTOR)

FIRE ALARM SYSTEM
THE PROPOSED FIRE ALARM TO COMPLY WITH BS 5839 - PART 1: 1988

EMERGENCY LIGHTING
THE SYSTEM TO COMPLY WITH BS 5266 AND INCORPORATE ADEQUATE ILLUMINATION OF ALL EXTERNAL STEPS WHICH SERVE EXIT DOORS.

FIRE STOPPING
FIRE STOPPING TO BE INSERTED INTO CEILING AS REQUIRED TO CREATE PROTECTED STAIRS, LOBBIES, CORRIDORS ETC
ALL VENTILATION DUCTS, PIPES ETC PASSING THROUGH COMPARTMENT FLOORS AND WALLS TO BE PROTECTED BY QUALIFIRE FIRE COLLARS

NOTICES

NOTICES WITH THE WORDS "PUSH BAR TO OPEN" TO BE DISPLAYED ON ALL FITTED WITH PANIC BOLTS OR PANIC LATCHES.
ALL FIRE RESISTING SELF CLOSING DOORS ARE TO BE PERMANENTLY MAINTAINED AT EYE LEVEL WITH A BLUE CIRCULAR NOTICE BEARING THE WORDS "FIRE EXIT" IN WHICH LETTERS ARE TO BE NOT LESS THAN 5MM IN HEIGHT.

DRAINAGE
SANITARY PIPE WORK IS TO COMPLY WITH PROVISION OF BS 572:1978. FO COMPLI WITH THE PROVISION OF BS 8301:1985 AND IS TO BE LAID IN ACCORDANCE WITH THE PROVISIONS OF BS 687:1983 AND BS 688:1983 AND BE RWP TO FALL INTO BACK INLET GULLEYS. ALL PIPE WORK PASSING UNDEF LESS THAN 600MM BELOW GROUND LEVEL TO BE SURROUNDED IN 150MM CONCRETE PIPE WORK PASSING THROUGH THE EXTERNAL WALLS TO HAVE CONCRETE INTERNAL MANHOLES TO BE CONSTRUCTED WITH 215MM SOLID ENGINEER BS3921 WITH REMOVABLE NON-VENTILATED STEEL COVERS WITH 150MM CEMENT MORTAR BEENCHING. ALL TO ENGINEERS ADVICE/DETAILS.

DISABLED TOILET
DISABLED TOILET TO COMPLY WITH PART M BUILDING REGULATIONS

VENTILATION
TOILETS, BATHROOMS AND KITCHENS TO HAVE MECHANICAL VENTILATION CAPABLE OF EXTRACTING AIR AT A RATE OF NOT LESS THAN 3 AIR CHANGES PER HOUR WITH 15 MINUTE OVER-RUN LINKED TO LIGHT SWITCH. ALL TO M & E CONSULTANTS DETAIL/CALCULATIONS.

STAIRS, STEPS AND GUARDINGS
TO COMPLY WITH PART M AND K. BALUSTRADING TO BE CAPABLE OF RESISTING A FORCE OF 0.74KN/M. TO ENGINEERS DETAIL/ADVICE

GLAZING
ALL GLAZING BELOW 800MM TO BE LAMINATED. ALL GLAZING TO DOORS BELOW 1500MM TO BE LAMINATED GLASS TO COMPLY WITH PART L2. PROVIDE MANIFESTATION AS NECESSARY

REFER TO M&E DRAWINGS FOR DRAINAGE & BUILDERS WORK REQ'S FOR I REFER TO BACK OF HOUSE DATA SHEETS FOR DETAILS, FITTINGS AND FINISHES. REFER TO FRONT OF HOUSE DATA SHEETS FOR DETAILS, FITTINGS AND FINISHES.

"H SIDE P SHUT"

IS TO THE KEEP M DIAMETER. TER. IG OR ALL. RK TO USE AT

Children & Young Persons permitted access to premises in terms of the Operating Plan

All activities referred to in Question 5 of the Operating Plan take place throughout entire premises

HARRISON INCE	ARCHITECTS INTERIOR DESIGNERS
client	JD WETHERSPOON PLC
project	FORMER WOOLWORTHS, 87 MAIN ST. PRESTMCK, KA9 1JX - PN6319
title	LICENSING PLAN
date	AUGUST 2010
scale	1:100 @ A1
job no.	JD271
drawg. no.	AM01/B
drawn	CAD/SC
checked	